



MAXKELLY HOLDINGS

Company Profile



Company

Overview

Company name	MAKELLY Holdings Co. Ltd.
Head office	13F Umeda Square Bldg. 1-12-17 Umeda Kita-ku, Osaka-shi, Osaka
Date of establishment	Jul. 2015
Services	[Salon development] Hair,nail,eyelash salon development planning, design mangement and construction [Salon administration] Hair,nail,eyelash salon administration and business efficiency development [Salon consulting service] Hair,nail,eyelash salon administration, development general consulting
Capital	1 million yen
Group annual sales	2015 fiscal year : 2.23 billion yen 2016 fiscal year : 2.52 billion yen 2017 fiscal year : 2.79 billion yen 2018 fiscal year : 3.04 billion yen
CEO	Ito Nao
Bank	SMBC (Sumitomo Mitsui Banking Corporation), Barclays Bank, City Bank
Main client	TAT, Nail partner, Kikuya Mikaido, Kate of Tokyo, Beauty garage, Beauty products
Employes (Entire group)	820 persons



Nail & Eyelash MAXKELLY

Message

MAXKELLY, Nail & Eyelash beauty salon, places importance to serve life-style of ladies with busy da-to-day schedule.

Our staff, well-informed with the latest technology and trend, will recommend nails and eye design to match your preference and personality.

It is possible to get simultaneous treatment of nails and eyelashes between any of our stores nation wide.

Company History



Nov. 2014

EBISU MAXKELLY

Nail • Eyelash OPEN !!

Apr. 2013

SHIBUYA FREEVE MAXKELLY

Nail • Eyelash OPEN !!

Jan. 2016

KOBE MAXKELLY

Nail • Eyelash OPEN !!

Company History

May 2016

UMEDA MAXKELLY

Nail • Eyelash OPEN !!

Sep. 2016

FUKUOKA MAXKELLY

Nail • Eyelash OPEN !!

Oct. 2018

BAROQUE MAXKELLY LONDON

Nail • Eyelash OPEN !!

Oct. 2019

M&M STUDIO MAXKELLY

NEWYORK

Nail OPEN !!





MAXKELLY Holdings Ltd.

Management fee
Sublease

100% Investment

SHIBUYA

EBISU

UMEDA

KOBE

FUKUOKA

UK
MAXKELLY
LONDON

NY
MAXKELLY
NEWYORK

Nail

We offer various courses from speedy & reasonably priced simple nails to popular "Any design you like" which you can customize to create own design, with several fixed-rate courses that offers the latest trends, in between.

Water and impact-resistant gel which the salon invented enables nails to remain beautiful for long time.



hand 60min art



hand 90min art



sculpture



foot nail

Eyelash

Unique extension technology provides a very soft and light attachment. Our high quality glue is praised for lasting very long while feeling comfortable.

And in addition to the latest technologies such as Volume Lash, Upward Lash, Parisienne Lash Lift, Bind Lock eye shampoo and many different treatments are at the hear



single lash



parisienne lash lift



upward lash



volume lash





MAXKELLY EBISU

2F,3F,4F,5F, Arai Bldg. 1-3-9 Ebisu-minami, Shibuya-ku, Tokyo
Total floor space: 560m²

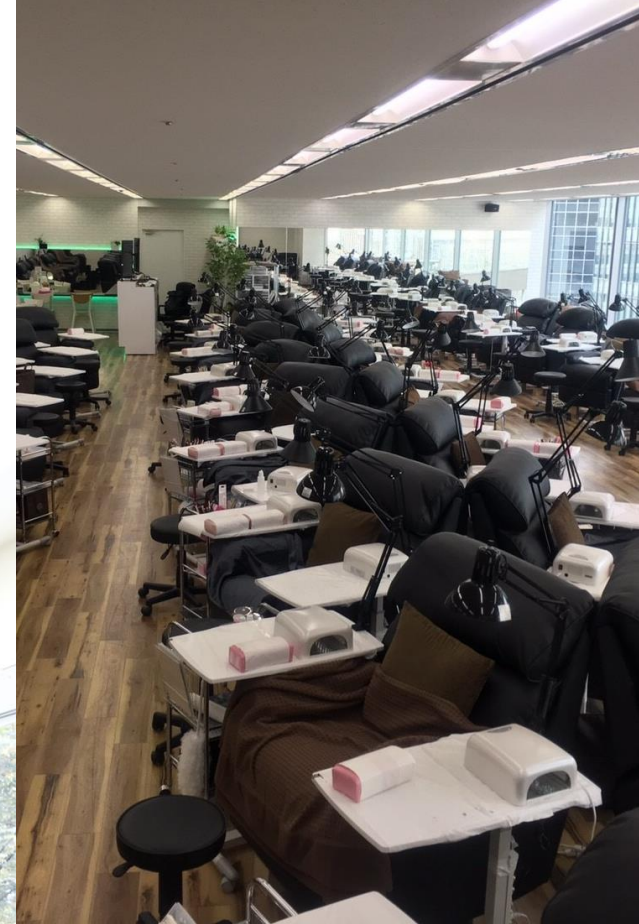
- Nail: 30 places (75 nailists)
- Eyelash: 30 places (85 eyelists)
- Front staff: 5 persons
- Staff: 170 persons



FREEVE MAXKELLY SHIBUYA

Shibuya-ku, Tokyo Dogenzaka 2-28-4 IMON Bldg. 1,2,3,4,6,9F. Others 3F.
Total floor space: 1,060m²

- Nail: 58 places (115 nailists)
- Eyelash: 51 places (100 eyelists)
- 12 places for 15 staffs
- Front staff: 10 persons
- Staff: 250 persons



MAXKELLY KOBÉ

1F, Grand plaza toa Bldg. 2-5-9 Kitanagasadori, Chuo-ku, Kobe-shi, Hyogo
Total floor space: 260m²

- Nail: 15 places (35 nailists)
- Eyelash: 16 places (30 eyelists)
- Front staff: 3 persons
- Staff: 70 persons



MAXKELLY OSAKA

10F, 13F(reception) Umeda Square Bldg. 1-12-17 Umeda Kita-ku, Osaka-shi, Osaka
Total floor space: 500m²

- Nail: 50 places (95 nailists)
- Eyelash: 30 places (75 eyelists)
- Front staff: 5 persons
- Staff: 180 persons



BAROQUE MAXKELLY LONDON
4 Pollen street ,London W1S 1ND



MAXKELLY FUKUOKA

3F, Tenjin Yoshida Bldg. 2-1-53 Daimyo,
Chuo-ku, Fukuoka-shi, Fukuoka

- Nail: 29 places (60 nailists)
- Eyelash: 26 places (55 eyelists)
- Front staff: 5 persons
- Staff: 120 persons



**M&M studio nyc
MAXKELLY**

**M&M STUDIO MAXKELLY
NEWYORK**

818 Avenue of the Americas
#2N New York, NY 10001

Salon Opening
Coming Soon...





LONDON

OSAKA

KOBE

FUKUOKA

TOKYO

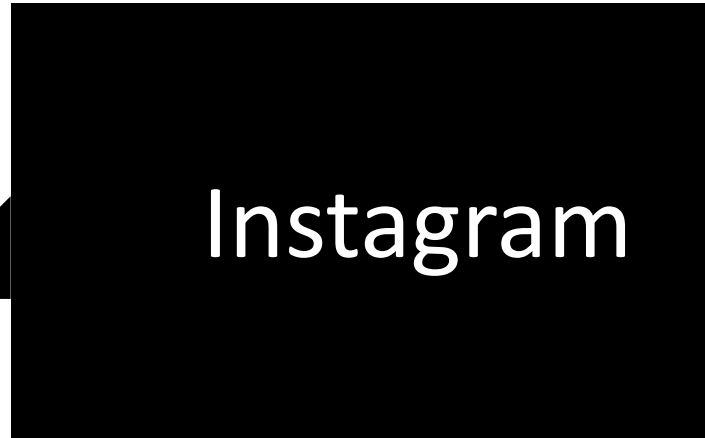
• SHIBUYA

• EBISU

NEWYORK

MAXKELLY

MAXKELLY HOLDINGS LTD.



☆Eyelash☆

@freeve_maxkelly_eyelash

☆Nail☆

@nail_eyelash_maxkelly.ebisu

@freeve_nail.eyelash

@umeda_maxkelly

@kobe.maxkelly

@fukuoka.maxkelly

【BAROQUE MAXKELLY LONDON】

@Baroque.maxkelly



Preview



- Nail & eyelash collection updated daily!
- Able to search from over 3000 nail and eyelash photos!
- You can find design in line with rich search function!
You can find your favorite design from scenes, colors, images, tags and more.
- The favorite design is "Like" and is favorite registration!
You can always look back on your favorites.
- It is easy to take over data by user registration!
- Check the "Recommends" category that is unique to the app!
- Give points as a salon user limited function!
- The app limited coupon will also be delivered!